



POCKET NAVIGATOR
for the
SOUTHERN CALIFORNIA
WETLANDS RECOVERY PROJECT (WRP)

Environment Now
on behalf of the WRP

(July 2003)

Consolidated by
Joan Hartmann, J.D.; Ph.D.
Environment Now, under Contract with the
State Coastal Conservancy

Edited by
Greg Gauthier, Watershed Coordinator,
Environment Now, under Contract with the
State Water Resources Control Board

Graphics by
Laura Slaby

DEDICATION

In Memory of Alan Thum,

A gentleman and a scholar
who worked passionately on behalf of
Southern California wetlands and watersheds—
in whose spirit we continue.

ACKNOWLEDGEMENTS

Many people have contributed to this project, which has created a lively grassroots momentum around watershed planning and wetlands restoration in Coastal Southern California. First and foremost are San Diego Regional Water Quality Control Board staff, Bruce Posthumous, who championed the grant proposal, and Debbie Woodward, who painstakingly oversaw each phase of the work with keen insight and good cheer. Next is Janie Mitsuhashi of the State Water Resources Control Board who ensured a constant stream of funding—with the able assistance of Shawn Kelly and Wanda Jenkins of Environment Now. Shirley Birosik of the Los Angeles Regional Water Quality Control Board has given countless hours attending meetings and offering her expert advise. Trish Chapman of the State Coastal Conservancy helped to coordinate this work and to ensure that a number of the watershed coordinators hired under the Proposition 13 grant can continue wetland work in Southern California under a Conservancy grant. Invaluable has been the GIS work by Aubry Dugger of GreenInfo Network and the ongoing support of Terry Tamminen, Executive Director of Environment Now.

At the center of the process have been the watershed coordinators and the task force co-chairs from each county who have invested their hearts in this effort:

Santa Barbara County. Supervisor Susan Rose and her aide Rachel Couch; Bud Laurent, Executive Director of the Community Environmental Council, and Watershed Coordinator Bob Thiel;

Ventura County. Supervisors Steve Bennett and John Flynn; County Planner, Lorraine Rubin; Roma Armbrust, President of the Ormond Beach Observers; and Watershed Coordinator Greg Gauthier;

Los Angeles County. Supervisor Zev Yaroslavsky and his aide, Maria Chong-Castillo; Rick Harter, Executive Director of the Los Angeles and San Gabriel Rivers Watershed Council along with Jason Casanova, GIS specialist; and Watershed Coordinator Mary Loquvam;

Orange County. Supervisor Tom Wilson and his chief of staff Holly Veale; County Planner, Kathie Matsuyama; Jean Watt, President of Friends of Harbors, Beaches and Parks of Orange County; and Watershed Coordinator Marilyn Thoms;

San Diego County. Supervisor Pam Slater and her aide, Sachiko Kohatsu; Doug Gibson, Executive Director of the San Elijo Lagoon Conservancy as well as program analyst

and data base specialist, Amy Kitchen—and of course,
Alan Thum.

Recognition also goes to Sujatha Gahagirdar and David
Rosenfeld of the California Public Interest Research Group
WaterWatch Program and all of the volunteer teachers and
workers they solicited.

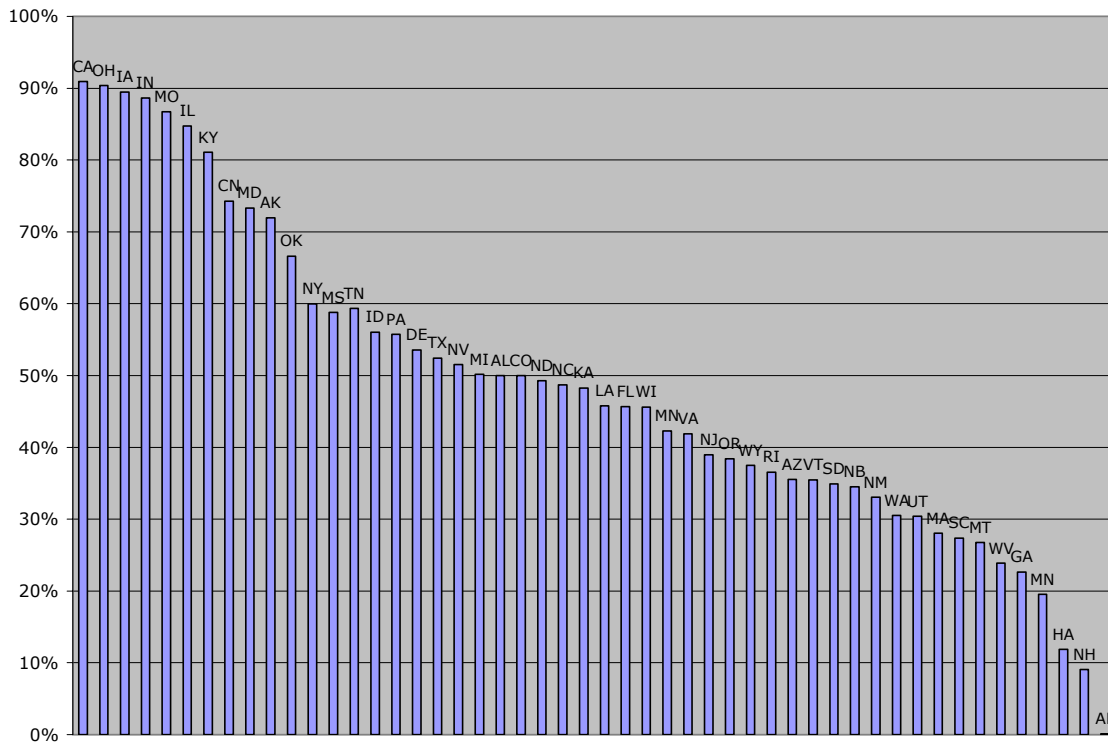
Funding for this project has been provided in full or in
part through a contract with the State Water Resources
Control Board (SWRCB) pursuant to the Costa-Machado Water
Act of 2000 (Proposition 13) and any amendments thereto for
the implementation of California's Nonpoint Source pollution
Control Program. The contents of this document do not
necessarily reflect the views and policies of the SWRCB, not
does mention of trade names or commercial products
constitute endorsement or recommendation for use.

PREFACE

This *Pocket Navigator* catalogs the many and varied products created by partners of the Southern California Wetlands Recovery Project (WRP) and shows how they fit within a Watershed Management Planning framework. It is also designed to meet requirements that apply to Proposition 13 Watershed Management Planning grants and to provide broad and ready access to useful planning tools. Moreover, by organizing the existing products in the *Pocket Navigator*, it is easier to identify what kinds of additional tools may be needed.

The WRP was formed as a regional partnership to restore wetlands in the five-county, South Coast area from Point Conception to the border with Mexico. While California has lost a greater percentage of its wetlands (rivers, streams, marshes) than any other state, wetlands conversion and degradation in Southern California has been especially pronounced because of the region's extremely high population growth and economic activity. In addition, vast hydrological changes have occurred in this Mediterranean region to import water for the long, dry summers while erecting extensive flood control facilities to shunt flood waters to sea during the wet winter months.

Percentage Wetland Loss by State



Source: National Research Council, *Restoration of Aquatic Ecosystems* (1992).

A 1993 Executive Order (W-59-93) called for creation of three regional partnerships to address wetlands losses in California, including Coastal Southern California. With over 16 million people, Southern California's five coastal counties exceed the populations of every state but New York and Texas and exceed the combined population of the 15 least populous states. About 25 percent of the nation's coastal population currently resides in the region. The gross regional product of about \$500 billion constitutes six percent of the entire U.S. economy, ranking the region as the 12th largest economy in the world. These forces combined with a fragile natural environment have led to losses of over 90 percent of historical wetlands and serious degradation of those remaining. Nonetheless, the region's vitality largely depends on its rivers, streams, marshes, and near shore waters—all the more precious in this semi-arid climate.

Thus, the Wetlands Recovery Project has evolved as a dynamic regional partnership to promote effective and efficient restoration work. Formally established in January 1998, the WRP has promoted scientific assessment and evaluation; developed an acquisition and restoration program; and created an extensive organizational partnership to support the work effort. It has expended over \$60 million on acquisition (52%), restoration (31%) and planning (17%) projects. While about 70 percent of the funding comes from state agencies, primarily through the State Coastal Conservancy, federal and private funds each account for about 10 percent of the total; the other ten percent comes from local funds (7%) and settlement agreements (3%).

The WRP began as a state and federal agency initiative with support from independent scientists. Local interests, however, have played an ever-increasing role in gathering locally generated information; identifying and carrying out projects; and promoting education about wetlands and watershed issues. They work through county task forces co-chaired by a county supervisor and leading county-wide environmental organization.

The Proposition 13 grant from the State Water Resources Control Board enabled each of the five WRP county task forces to hire a watershed coordinator for 15 months (April 15, 2002-July 15, 2003) to staff task force activities (organizing meetings, workshops, tours); to allow greater local participation in the activities of the WRP partner agencies and the Science Panel (developing project proposals and contributing to wetland and watershed assessment tools); and to create a number of tools including a Gaps Report

(identifying geographic and issue areas in each county in need of attention), a Watershed Plan Characterization (showing where plans have been completed and are underway), a Comprehensive Wetlands Restoration Project Inventory (a data base of potential projects), and a county-by-county list of possible project funders.

Additionally the grant funded the California Public Interest Research Group (CalPIRG) WaterWatch Program to support the task forces and the region as a whole with a volunteer network drawn from the University of California and the California State University systems. University students served as troops to perform waterway clean-ups, to conduct volunteer monitoring and restoration work, and to make presentations with hands-on learning activities for elementary classes throughout the region with the theme *Headwaters to Ocean (H2O): Water Connects All Life*. CalPIRG also created a Community WaterWatch Calendar so that people in each of the five counties can find out what is going on in the region and how they might get involved.

The WRP has formally existed since 1998, evolving into a extensive partnership that has spurred the creation of many watershed management planning products and tools. Nowhere, however, have they been catalogued and the relationship among them depicted. This *Pocket Navigator* serves that role; it provides a synopsis of documents describing the WRP's purpose, organization, wetland and watershed assessment tools, regional planning efforts, projects, education and outreach, science and research, funding sources, and related project work. It provides a basis for understanding the WRP and for continuing to expand and integrate the WRP partnership.

CONTENTS

PURPOSE	1
Vision.....	1
Mission.....	1
Goals.....	2
ORGANIZATION AND PARTNERS	2
Wetlands Recovery Project Organization Chart.....	3
State and Federal Agency Partnership.....	3
Governing Board.....	3
State Coastal Conservancy (SCC).....	4
Managers Group.....	4
Advisory Committees.....	5
Science Advisory Panel (SAP).....	5
Public Advisory Committee (PAC).....	5
Five County-Level Task Forces.....	6
Other Partners.....	7
California Coastal Coalition (CalCoast).....	7
California Public Interest Research Group (CalPIRG)	
WaterWatch Program.....	7
California Regional Environmental Education Community	
(CREEC).....	7
Earth Island Institute.....	7
Environment Now.....	7
Southern California Coastal Water Research Project ...	8
University of California Cooperative Extension Program	8
REGIONAL WETLANDS ASSESSMENTS	8
Precursor Assessments.....	8
Zedler Coastal Wetland Profile.....	8
National Research Council Study.....	8
Ferren Classification System.....	8
Initial WRP Assessment Activities.....	9
Southern California Coastal Wetlands Inventory.....	9
Science Panel Assessment of 1997.....	9
Pilot Watershed Inventory.....	9
Current WRP Assessment Framework.....	9
Assessment Diagram.....	10
New Mapping, Inventory & GIS Data (Level I).....	11
National Wetlands Inventory (NWI).....	11
Southern California Riparian Mapping Pilot Project	
(SCRMPP).....	11
Interferometric Synthetic Aperture Radar (IFSAR)	
Topographic Data.....	12
Coastal Change Analysis Program (C-CAP) Land Cover Data	
.....	12
Wetland and Riparian EcoAtlas Data Base.....	12
Dynamap®/Display.....	12
Wetlands Assessment Tools (Level II).....	12
Southern California Riparian Ecological Assessment	
Method (SCREAM).....	13
Environmental Monitoring and Assessment Program (EMAP)	
.....	13

California Rapid Assessment Method (CRAM)	13
Standardizing Site-Specific Monitoring (Level III)....	14
Key Resources.....	14
WRP Information Station	14
Toolbox for Watershed Management	15
Selected Tools and Information	15
REGIONAL PLANNING	16
Regional Strategy.....	16
Five-Year Implementation Plan.....	16
Initial Gaps Report.....	16
Watershed Management Plans–Regional GIS Map and Data Base.....	17
ON-THE-GROUND PROJECT WORK	18
Project Work Plan.....	18
Project Evaluation Criteria	18
Project Selection Process	18
Project Work Plan	19
Small Grants Program	20
Data Base of Potential Projects.....	20
WETLANDS EDUCATION & WRP OUTREACH	21
Initial Assessment Activities.....	21
Interpretive Centers of the South Coast	21
Ventura County Strategic Plan for Environmental Education	21
Region-Wide Educational Materials.....	21
CREEC Compendium of Wetlands and Watershed Materials	21
Video–California Wetlands, Investments in Our Economic Future	22
Photo Exhibit–Classroom without Walls	22
Maps and Photos	22
Introduction to Southern California Coastal Wetlands	22
Glossary of Wetland Terms	22
H2O: Headwaters to Oceans, Connecting All Life	22
WaterWatch Trash Inventories	23
Educational Materials with Local Focus.....	23
San Diego Wetlands Kit	23
Orange County Green Map and Power Point Presentation	23
Watershed Guide for Ventura County Board of Supervisors	24
Santa Barbara Creek Care Guide	24
Symposia, Sacramento Legislative Breakfast & Workshops	24
Symposia	24
Sacramento Legislative Breakfast	24
Workshops	25
Activities to Promote Diversity.....	25
Selected WRP Small Grants	25
Partnership with Mexican American Opportunity Foundation	25
Greig Peters Wetlands Recovery Awards.....	25
Initial WRP Outreach Activities.....	26
Initial Outreach Survey	26
Evolution of WRP	26
WRP Outreach Resources.....	26
WRP Logo	26

Wetlands Recovery Project Brochure & Insert	27
WRP News and Info	27
CalCoast Legislative Update	27
E-Mail Lists of Interested Parties	27
Community Volunteer Calendar	27
SCIENCE & RESEARCH	28
Matrix of Studies on Monitoring Metrics	28
Treatment Wetlands Review	28
FUNDING	29
WRP Funds	29
Non WRP Funds	29
Government Grants	29
Local Funding Sources	29
Funding Workshops & Grant Writing	29
RELATED PROJECT WORK	30
Other Regional Partnerships Identifying & Ranking Projects	30
Clean Beaches Initiative	30
California Coastal Sediment Management	30
Southern California Water Dialog	30
Emerging Regional Approaches	31
California Legacy Project	31
Critical Coastal Areas of Southern California	31
Other	32

POCKET NAVIGATOR for the SOUTHERN CALIFORNIA WETLANDS RECOVERY PROJECT (WRP)



PURPOSE

Vision

The Wetlands Recovery Project coordinates efforts and targets resources, turning piecemeal activities into a visionary, long-term regional approach. It's efforts will breathe life into the region's natural community, and a string of vibrant, graceful wetlands will offer new perspectives on the region's geography and culture. The benefits will extend beyond the wetland borders:

Communities Islands of beauty and calm in a region beset by growth pressures, restored wetlands will play an integral role in the lives of Southern California communities. . . . becoming a touchstone for a community's quality of life.

Biodiversity Internationally significant. . . our biological diversity will mirror our ethnic diversity.

Economy Already an essential component of our \$500 million sport fishing industry, and holding great potential for flood protection and groundwater recharge, wetlands will continue to fuel the Southern California economy. Their filtering capabilities offer cost-effective means to improve water quality. As Pacific Flyway populations are restored and access to these areas is potentially improved, the wetlands can play a growing role in tourism.

For full text, see Vision Statement at www.scc.ca.gov./scwrp, WRP Documents.

Mission

To acquire, restore and enhance coastal wetlands and watersheds between Point Conception and the International border with Mexico. Using a non-regulatory approach and an ecosystem perspective, working together to identify wetland acquisition and restoration priorities, prepare plans for these priority sites, pool funds to undertake these projects, implement priority plans, and oversee post-project maintenance and monitoring. . . . [resulting] in the long term increase in the quantity and quality of the region's wetlands.

For full text, see Working Agreement, www.scc.ca.gov/scwrp, WRP Documents.

Goals

To re-establish a mosaic of fully functioning wetlands systems with a diversity of habitat types and connections to upland communities that preserves and recovers self-sustaining populations of species.

1. Preserve and restore coastal wetland ecosystems.
2. Preserve and restore stream corridors and wetland ecosystems in coastal watersheds.
3. Recover native habitat and species diversity.
4. Integrate wetlands recovery with other public objectives.
5. Promote education and compatible access related to coastal wetlands and watersheds.
6. Advance the science of wetlands restoration and management in Southern California.

For full text with statement of need and key implementation strategies, see www.scc.ca.gov/scwrp, WRP Documents, Regional Strategy, Chapter on Regional Goals.

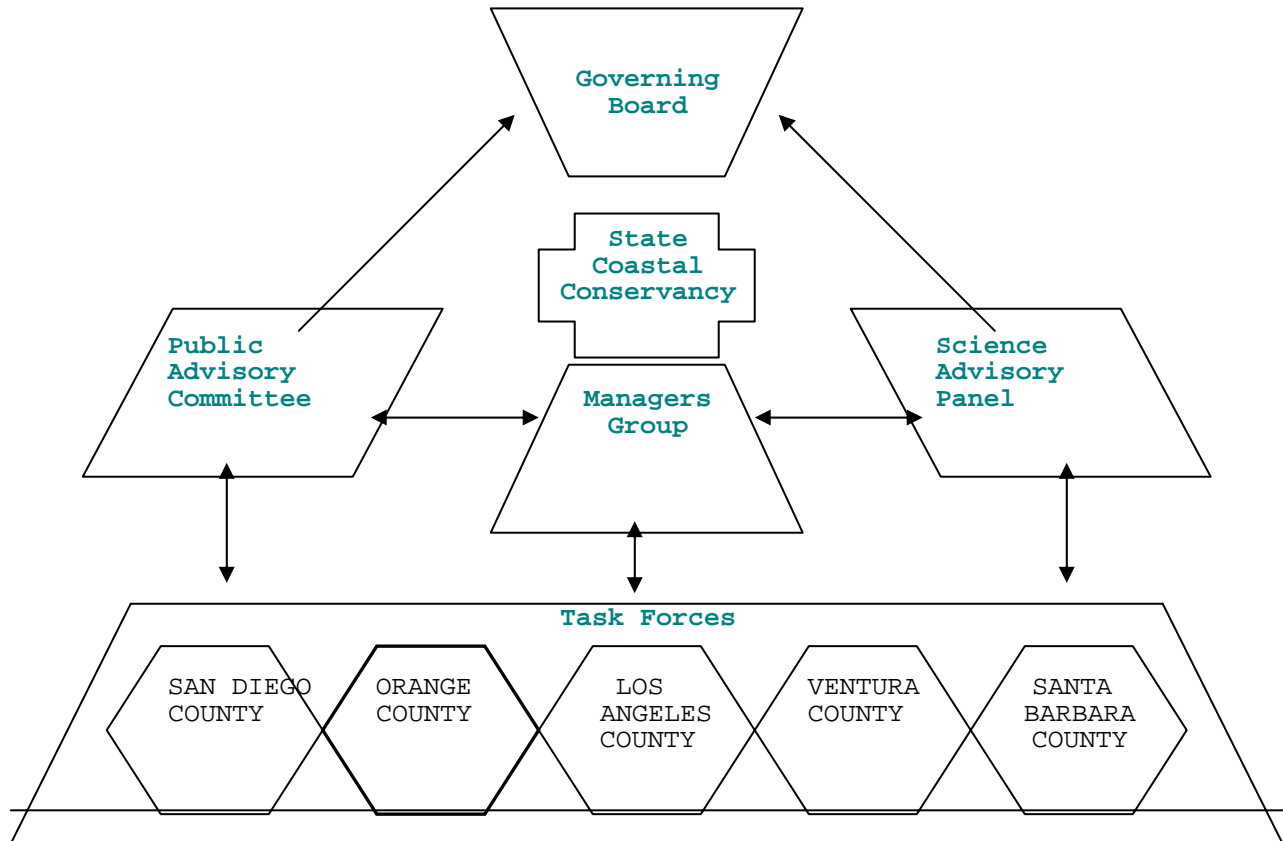
ORGANIZATION AND PARTNERS

The Wetlands Recovery Project is a broad, community-based effort supported by over 20 state and federal agencies in partnership with an illustrious Science Panel and Public Advisory Community—all working in concert with 5 county-level task forces. The WRP partners share a belief that

recovering the vitality of the region's wetlands requires a committed and inclusive partnership effort.

To receive notices about WRP activities, subscribe at www.scc.ca.gov/scwrp; for notices about legislative affairs, contact steveaceti@calcoast.org.

Wetlands Recovery Project Organization Chart



For information on individuals serving in different organizational capacities, see www.scc.ca.gov/scwrp, WRP Participants.

State and Federal Agency Partnership

Governing Board

Sets general policy and approves the annual Project Work Plan (see below). Member agencies have mandate to protect or restore wetlands and have signed the WRP's charter document, the Working Agreement (see below). Chaired by the Secretary of the Resources Agency, members are heads of represented agencies; ex officio members include chairs of the Science

Panel and the Public Advisory Committee. Meets 3-4 times each year in different locations throughout region.

Meetings announced through e-mail notices to listserv; all proceedings posted at www.scc.ca.gov/scwrp, WRP Archives.

State Coastal Conservancy (SCC)

Oversees partnership, serving as staff to the Governing Board and Managers Group and as the primary fiscal agent for WRP funds; provides project managers to implement key Work Plan projects; and coordinates activities across organizational entities.

Managers Group

Responsible for inter-agency coordination, especially developing and implementing the Work Plan and other multi-agency initiatives approved by the Governing Board. Chaired by a federal partner agency. Members represent Governing Board agencies and keep Board members and agencies apprised of WRP activities. Meets monthly, usually at the Long Beach offices of the National Marine Fisheries Service.

For meeting information, contact tchapman@scc.ca.gov. Managers listed at www.scc.ca.gov/scwrp, WRP Participants.

WETLANDS RECOVERY PROJECT AGENCY PARTNERS

STATE AGENCY PARTNERS

Resources Agency; www.resources.ca.gov
California Coastal Commission; www.coastal.ca.gov
Department of Parks and Recreation; www.parks.ca.gov
Department of Fish and Game; www.dfg.ca.gov
State Lands Commission; www.slc.ca.gov
State Coastal Conservancy; www.scc.ca.gov
San Diego River Conservancy www.resources.ca.gov/conservancies???
Santa Monica Bay Restoration Commission; www.smb.org???
Santa Monica Mountains Conservancy; www.ceres.ca.gov/smmc???
Rivers and Mountains Conservancy; www.rmc.ca.gov

California Environmental Protection Agency; www.calepa.ca.gov
State Water Resources Control Board; www.swrcb.ca.gov
San Diego Regional Water Quality Control Board; www.swrcb.ca.gov/rwqcb9
Santa Ana Regional Water Quality Control Board; www.swrcb.ca.gov/rwqcb8
Los Angeles Regional Water Quality Control Board;
www.swrcb.ca.gov/rwqcb4
Central Coast Regional Water Quality Control Board;
www.swrcb.ca.gov/rwqcb3

FEDERAL AGENCY PARTNERS

National Marine Fisheries Service, Southwest Region;
<http://swr.nmfs.noaa.gov>
Natural Resources Conservation Service; www.ca.nrcs.usda.gov
U.S. Fish and Wildlife Service; www.fws.gov
U.S. Environmental Protection Agency; www.epa.gov
U.S. Army Corps of Engineers; www.usace.army.mil

Advisory Committees

Science Advisory Panel (SAP)

Identifies strategies to improve regional wetlands recovery and management; prepares position papers, and develops research program to address critical issues related to wetlands restoration. Also reviews documents and helps to sponsor annual symposium. Currently focused on developing a regional wetlands monitoring program to assess wetland status and trends and to report on progress towards WRP goals. Members nominated by the Managers Group, reviewed by the Science Panel and approved by the Governing Board. Chaired by the Southern California Coastal Water Research Project with half-time staff support. Responsibilities described in Governing Board Report: *Structure and Role of the Science Advisory Panel* (June 2000); Panel creation described in Governing Board Report, *Science Advisory Panel* (April 1998). Has four one-day meetings a year, usually at the SCCWRP offices in Westminster.

For Science Panel information, contact marthas@sccwrp.org. To access meeting materials, see www.scc.ca.gov/scwrp, WRP Documents; for above reports, see www.scc.ca.gov/scwrp, WRP Archives, section on Governing Board Meeting Materials.

SCIENCE PANEL MEMBERS

Steve Weisberg, Ph.D., Chair of Science Panel
Executive Director, Southern California Coastal Water
Research Project

Rich Ambrose, Ph.D.; UCLA

John Callaway, Ph.D.; University of San Francisco

John Dixon, California Coastal Commission

Michael Horn, California State University, Fullerton

Michael Josselyn, Ph.D.; San Francisco State University

Sharook Madon, Pacific Estuary Research Lab, San Diego
State University

Keith McDonald, CH2M Hill, Seattle

Ken Schwarz, Jones and Stokes Associates

Martha Sutula, Ph.D. (Science Panel Staff), Southern California Coastal
Water Research Project

Eric Stein, Ph.D.; Southern California Coastal Water
Research Project

Richard Zembal, Ph.D., Orange County Water District

Public Advisory Committee (PAC)

Represents community interests to Governing Board, promotes WRP interests to legislators and other decision makers; and builds broader constituency for wetlands recovery in the region. Members drawn from local government, community

organizations, business and education field. Membership Committee selected by PAC Chair reviews members (up to 5) selected by each task force and supplements them with "at large" members to fill any gaps in terms of representation and PAC needs. Other committees include the Legislative Affairs Committee that organizes an annual WRP event in Sacramento (in conjunction with PAC member CalCoast) and the Cross-County Task Force Committee which promotes cross-county information exchange and coordination. Chaired by the nonprofit foundation, Environment Now with staff support from the WRP Outreach Director. Meets 3-4 times a year, most often at the offices of Environment Now in Santa Monica.

For PAC information, contact jrhartmann@aol.com. To access PAC Bylaws, see WRP Documents, for PAC Reports to the Governing Board, see www.scc.ca.gov/scwrp, WRP Archives, Governing Board Meeting Materials.

Five County-Level Task Forces

The grassroots base of the WRP, the task forces aggregate community interests around wetlands and watershed issues, particularly bringing local government together with community organizations. They engage in information gathering for the WRP (projects, contacts, data, planning needs); promote information exchange and efficiencies within and across counties; and through education and outreach, help build broader constituencies to support WRP work. Membership is open to any community member eager to participate. Co-chaired by a county Supervisor and a leading community environmental organization. Most meet monthly, about 8-10 times a year.

For more contact information, see www.scc.ca.gov/scwrp, WRP Participants; see also section titled Overview of the WRP.

San Diego Task Force – Chaired by Supervisor Pam Slater and the San Elijo Lagoon Conservancy (www.sanelijo.org).

For meeting information, contact dg@sanelijo.org.

Orange County Task Force – Chaired by Supervisor Tom Wilson and the Friends of Harbors, Beaches and Parks of Orange County (www.ocfohbp.org).

For meeting information, contact jwatt4@aol.com.

Los Angeles County Task Force – Chaired by Supervisor Zev Yaroslavsky and the Los Angeles and San Gabriel Rivers Watershed Council (www.lasgrwc.org).

For meeting information, contact rick@lasgrwc.org.

Ventura County Task Force – Chaired by Supervisor Steve Bennett and the Ormond Beach Observers;

For meeting information, contact armbrustr@vcss.k12.ca.us.

Santa Barbara County Task Force – Chaired by Supervisor Susan Rose and the Community Environmental Council (www.communityenvironmentalcouncil.org).

FOR MEETING INFORMATION, CONTACT BTHIEL@SCWRP.ORG

Other Partners

California Coastal Coalition (CalCoast)

Tracks legislative affairs related to wetlands and watershed issues, manages WRP listserv, and disseminates digital newsletter. See www.calcoast.org; contact steveaceti@calcoast.org.

California Public Interest Research Group (CalPIRG)

WaterWatch Program

Sponsors clean-ups and trash inventories, volunteer monitoring activities, and elementary classroom presentations on wetlands and watershed issues by college students. Can provide crews for restoration work to task force member organizations. See www.environmentcalifornia.org; contact sujatha@environmentcalifornia.org.

California Regional Environmental Education Community (CREEC)

Maintains a searchable web site with watershed education materials to inform teachers and those who develop such materials about what is available. See www.creec.org.

Earth Island Institute

Helps to promote and fund the WRP small grant program. See www.earthisland.org.

Environment Now

Serves as the nonprofit, 501(c)(3) umbrella for the WRP's community-based activities including the Public Advisory Committee, the county task forces, the small grant program, the Proposition 13 grant from the State

Water Resources Control Board, and the Technical Assistance Program grant from the State Coastal Conservancy. See www.environmentnow.org.

Southern California Coastal Water Research Project

Serves as the locus for WRP scientific research and program assessment work, chairing the WRP Science Panel and housing its staff person. See www.sccwrp.org.

University of California Cooperative Extension Program

Develops watershed management planning materials and programs applicable to Southern California's urbanized environment. See www.celosangeles.ucdavis.edu/natural_resources; contact sdrill@ucdavis.edu.

REGIONAL WETLANDS ASSESSMENTS

Precursor Assessments

Zedler Coastal Wetland Profile

The Ecology of Southern California Coastal Salt Marshes: A Community Profile (1982). One of the earliest efforts to view Southern California coastal wetlands regionally. Zedler was among the first to call for regional approach to restoration.

U.S. Fish and Wildlife Service Rept. No. FWS/OBS-81-54

National Research Council Study

Finding that California has lost 91 percent of its wetlands, a greater percentage than any other state in the nation, including Florida and Louisiana which rank 26th and 27th respectively with 46 percent losses. *Restoration of Aquatic Ecosystems: Science, Technology and Public Policy* (1992).

For information, see www.nap.edu/catalog/1807.html.

Ferren Classification System

Wetlands of the Central and Southern California Coast and Coastal Watersheds: A Methodology for Their Classification and Description (1995; updated 1996; prepared for U.S. Environmental Protection Agency, Region 9.) Provides a framework for understanding the variety of wetlands in Southern California's Mediterranean Climate (one of only 5 in the world), whose characteristics differ markedly from wetlands in moister areas.

To access, <http://lily.mip.berkeley.edu/wetlands/>

Initial WRP Assessment Activities

Southern California Coastal Wetlands Inventory

Completed in 1998 by the state Coastal Conservancy, this first assessment product of the WRP describes 41 coastal wetlands from the Tijuana Estuary in San Diego County to Devereux Slough in Santa Barbara County with profiles that include information about size, conditions, and threats; bibliographies citing sources from which profiles constructed; historic and current maps. The Coastal Wetland Inventory has since been included in the WRP Information station.

To access, see www.wrpinfo.scc.ca.gov.

Science Panel Assessment of 1997

A summary paper, *Regional Restoration Planning for Southern California Coastal Wetlands: Science Advisory Workshop* (October 1997), describes a workshop in which Science Panel members, using the Coastal Wetlands Inventory and their best professional judgment, identified principles to guide restoration planning and targeted areas of immediate concern.

To be posted at www.scc.ca.gov/scwrp, WRP Archives.

Pilot Watershed Inventory

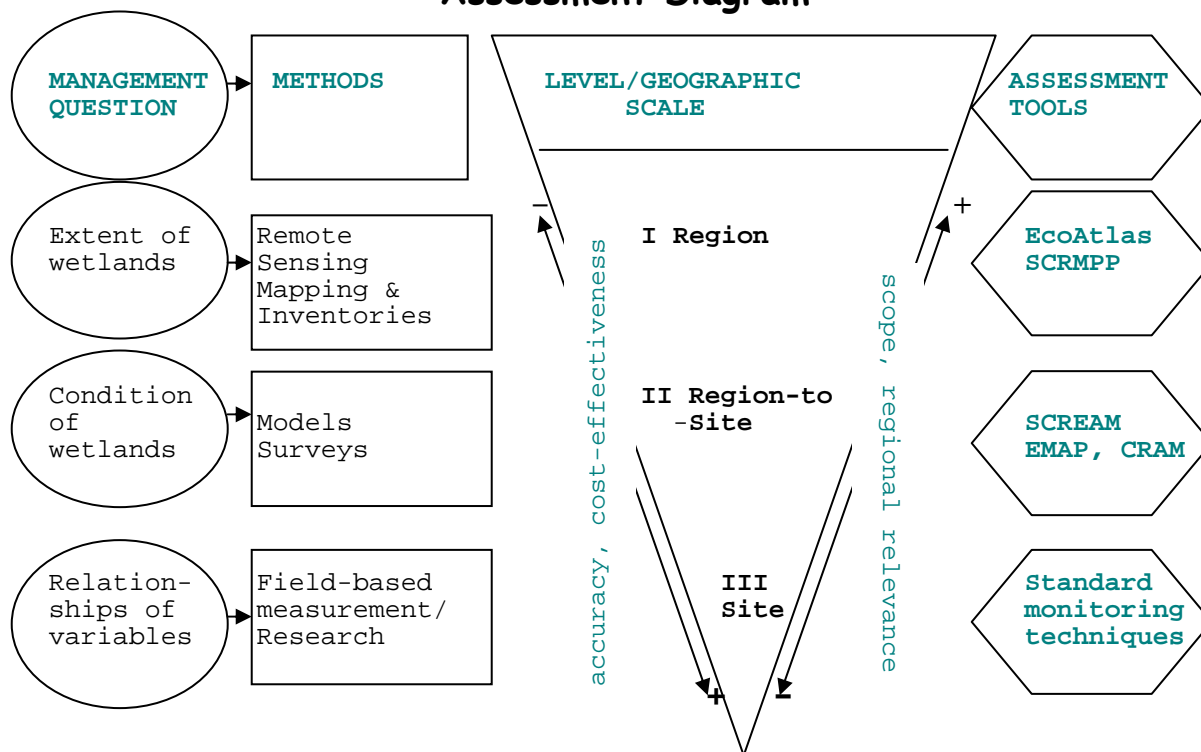
Effort to adapt methodology used in the Coastal Wetlands Inventory to the region's watersheds focusing on Los Penasquitos Lagoon watershed, the middle reach of the Santa Ana River, the tributaries of the Santa Clara River to enhance existing data on main stem, and later including the Ventura and Los Angeles Rivers. Pilots selected for regional representation, variety, and Regional Water Board priorities. Work funded by the U.S. Environmental Protection Agency. This was incorporated into the WRP Information Station where these watersheds are more intensively described with GIS and other data than the other watersheds in region.

To access, see www.wrpinfo.scc.ca.gov.

Current WRP Assessment Framework

An effective assessment framework matches methods and tools to pertinent resource management questions. The Science Panel seeks to measure progress towards the WRP's six regional goals at both the site-specific project level, but also at the programmatic, regional level. Different methods and tools are appropriate for different geographic scales of analysis and management questions—e.g., Level I tools describe wetland distribution and extent, Level II tools describe wetland condition, and Level III tools describe the causes of wetland condition by linking human activities to effects on natural processes. The development of a suite of tools at different levels means that work on one advances and validates work on others. The Science Panel is working closely with state and federal agency advisors and is receiving technical advise and assistance from local government and community organizations to ensure that the tools fit the needs of decision makers. The Science Panel is also forming relationships with other regional partnerships in California (e.g., the San Francisco Bay and Central Coast) to share approaches and technical expertise.

Assessment Diagram



Methods and tools developed for wetter regions of the country are not readily adapted to the semi-arid climate of coastal Southern California. Thus, the Science Panel is developing customized assessment tools compatible with the ecology of Southern California wetlands. The Science Panel

is working closely with state and federal agency advisors and is receiving technical advice and assistance from local government and community organizations to ensure that the tools fit the needs of decision makers working at different levels.

To acquire a summary PowerPoint presentation, contact martha@sccwrp.org.

To acquire position paper, *Improving Regional Planning of Wetland Ecosystem Restoration and Management in Southern California* (May 2002), see www.scc.ca.gov/scwrp, WRP Documents.

To acquire progress report on initiatives presented *Report on SAP Regional Planning Position Paper* (October 2002), contact marthas@sccwrp.org; a detailed white paper describing the regional monitoring framework will be available by Summer 2004 from marthas@sccwrp.org.

New Mapping, Inventory & GIS Data (Level I)

National Wetlands Inventory (NWI)

Periodically updated or renewed by the U.S. Fish and Wildlife Service (FWS) to report on the status and trends of nation's wetlands. The new inventory of coastal Southern California's estuarine wetlands will be completed in 2004. Funding to map freshwater wetlands is being sought and the FWS is partnering in the SCRMP (below) to demonstrate the accuracy of its method to map Southern California riparian areas in two coastal watersheds.

Will be available through link to the USFWS/NWI website.

Southern California Riparian Mapping Pilot Project (SCRMP)

Funded by National Oceanic and Atmospheric Administration's Coastal Services Center and the U.S. Geological Survey to develop cost-effective mapping of riparian areas in the WRP program area and serve as a pilot for state-wide mapping of riparian resources. Will develop a GIS-based method to delineate geomorphic riparian zone boundaries and compare different remote sensing technologies for utility versus cost in mapping vegetative cover. Will also be used to demonstrate the National Wetland Inventory's riparian mapping methodology for two watersheds in the region (above). Will test different levels of resolution (30, 4, and 1 meter), comparing with manually interpreted vegetation imagery, to determine the most cost-effective, reliable way to delineate the region's riparian areas.

To acquire SCRMP Project Description, contact marthas@sccwrp.org.

Interferometric Synthetic Aperture Radar (IFSAR)

Topographic Data

To be acquired through the National Oceanic and Atmospheric Administration's Coastal Services Center (NOAA CSC) to provide 1 5-meter digital terrain model for the WRP's entire geographic region. Can be used to delineate riparian zone boundaries, model hydrology in watershed assessment models, for county land-use planning, and as digital elevation model for SCREAM (see below).

Available in fall 2003 through [link to NOAA/SCS website](#).

Coastal Change Analysis Program (C-CAP) Land Cover Data

Created by the National Oceanic and Atmospheric Administration's Coastal Services Center (CSC) to map and detect changes in land use through regional landscape-scale land cover data. The CSC is generating this 30-meter data set for the entire coastal zone of the Pacific Coast. Will feature detailed categories of urban land uses specifically in Southern California, and will be used to generate a data set describing watershed imperviousness. A major driver in the SCREAM model (below) to assess riparian conditions.

Available in fall 2004 through [link to the NOAA/SCSC website](#).

Wetland and Riparian EcoAtlas Data Base

Set of GIS maps and spatial data sets that describe physical and biological resources, land use, topography, etc. for Southern California wetlands and riparian areas.

All data will be available through WRP Information Station, www.wrpinfo.scc.ca.gov.

Dynamap®/Display

Statewide GIS data base featuring streets, landmarks and natural features acquired and licensed for use by the WRP Science Panel and Task Forces. Can serve to identify development surrounding wetlands and to create maps to locate proposed restoration and acquisition projects for grant proposals and research.

To acquire, contact rick@lasgrwc.org.

Wetlands Assessment Tools (Level II)

Southern California Riparian Ecological Assessment Method (SCREAM)

GIS-based landscape-scale assessment method to evaluate the condition of riparian area habitat, biogeochemistry, and hydrology. Can be used to assess a riparian reach's ambient condition and to describe its preservation and restoration potential. Under development by the Science Panel in conjunction with the National Oceanic and Atmospheric Administration's Coastal Services Center and with active participation by technical experts and local interests. Being developed and tested in five pilot watersheds selected on basis of watershed character and degree of urbanization: Carpinteria Creek (Santa Barbara County), Ventura River (Ventura County), San Gabriel River (Los Angeles County), San Diego Creek (Orange County), Escondido Creek (San Diego County). The habitat component of the model for Carpinteria Creek will be complete by August 2003 and analysis for all five pilots is expected by Summer 2005.

For information, contact marthas@sccwrp.org.

Environmental Monitoring and Assessment Program (EMAP)

A five-year West Coast program conducted by the U.S. Environmental Protection Agency, Office of Research and Development to assess estuarine condition through probability-based survey. In 2002, EMAP sampled estuarine inter-tidal wetlands for a core set of indicators with "intensification" of randomly selected sites in the San Francisco Bay Area and in Southern California where EPA is collaborating with WRP Science Panel. Indicators included sediment contamination, vegetative community composition, GIS analysis of habitat fragmentation, population density, and surrounding land use. Will result in survey sampling designs and indicators to most cost-effectively describe regional wetland condition.

For information, see www.epa.gov/region09//water/wemap; or contact fleming.terrence@epa.gov.

California Rapid Assessment Method (CRAM)

A field-based survey to evaluate the condition of wetland areas for baseline, restoration, and compliance monitoring. Cooperatively developed by the Southern California Coastal Water Research Project, the San Francisco Regional Monitoring Program, and the California Coastal Commission's Central Coastal Comprehensive Wetlands GIS Data Base with funding and assistance from the U.S. Environmental Protection Agency Clean Water Act (Section 104). The developers are holding several workshops for local interests to comment on and test CRAM. Anticipated to have a base set of indicators appropriate for the entire coast, or possibly

the entire state, with special "offramps" to adapt the tool for use in specific regions such as the South Coast, Central Coast, and Bay Area. A provisional version available in December 2003 and a Users Manual will be completed by December 2004..

For information, contact marthas@sccwrp.org.

Standardizing Site-Specific Monitoring (Level III)

Although state and federal agencies that fund or carry out wetlands restoration activities require some type of monitoring at project completion and usually for several years beyond, there are no standardized procedures, reporting requirements or data dissemination practices. Each restoration project potentially represents an experiment that can inform future work, but first requires that information be collected and stored in ways that can be readily accessed. Over the next year, the Science Panel will seek to determine how the WRP can begin to address this issue by developing a minimum set of monitoring and electronic reporting requirements.

A white paper describing the framework will be available by Summer 2004 from marthas@sccwrp.org.

Key Resources

WRP Information Station

An innovative compendium and mapping tool for wetlands and watershed assessment, planning and restoration work. For use by students and educators, agency personnel, and community activists. Created by the State Coastal Conservancy to do the following:

- Profiles the region's coastal wetlands (the Southern California Coastal Wetland Inventory) and watersheds (with much greater detail for those in the Pilot Watershed Inventory);
- Describes the WRP-sponsored acquisition and restoration projects;
- Contains a reference library of bibliographic materials on the condition of the region's wetlands and watersheds into which the Matrix of Studies (below) will be incorporated;
- Provides an extensive set of links to related organizations and web sites;

- And most innovatively, offers three levels (beginner, intermediate, and advanced) of interactive GIS mapping capability using an ever-expanding data base of materials. Users can view maps with zoom and query features; they can select, overlay, and tailor their own maps; or they can download the original data sources for combination with their own data resources.

To access, see www.wrpinfo.scc.ca.gov.

Toolbox for Watershed Management

A web-based list of existing tools, with web links, to guide the process of forming a watershed group, getting the public interested, writing a watershed management plan, and developing restoration projects. Created by the Cooperative Extension Program of the University of California in consultation with the WRP Task Force of Los Angeles County (Education Working Group).

To access, see celosangeles.ucdavis.edu/natural_resources/toolbox.html

Selected Tools and Information

The WRP web site hosted by the State Coastal Conservancy contains sections listing resources available in three categories: wetlands, watershed planning and management, and species.

See www.scc.ca.gov/scwrp, section on Tools and Information, Wetlands and Watershed Resources.

REGIONAL PLANNING

Regional Strategy

The Southern California Wetlands Recovery Project Regional Strategy (November 2001) is the most current planning document that charts the direction for the Wetlands Recovery Project. It describes the long-term goals of the WRP and specific implementation strategies to guide the efforts of the WRP and its partners. The document is divided into five chapters and two appendices: (1) introduction describing the region, its wetlands, the WRP, and how the Strategy was developed, reviewed and adopted; (2) summary of conditions prevailing in region's wetlands and watersheds; (3) goals and strategies for realizing them; (4) county-specific objectives; (5) separately bound 5-year implementation plan (see below); (App. A) detailed summary of watershed conditions, later incorporated into the WRP Information Station; and (App. B) Summary of regional plans that relate to wetlands recovery.

To access, see www.scc.ca.gov/scwrp, WRP Documents.

Five-Year Implementation Plan

The Implementation Plan identifies 7 different categories of activity with 41 distinct actions to be carried out by the end of 2006: (1) Wetland projects—13 actions including identification of high priority wetlands); (2) Integration of wetlands restoration with other policy objectives—1 primary action; (3) Access, Education, and Outreach—12 actions; (4) Science—4 actions; and (5) Information exchange—5 actions; (6) Agency partnerships—1 action; and (7) Funding—5 actions. A Proposition 13 grant awarded by the State Water Resources Control Board to fund this *Pocket Navigator* allowed for the Task Forces and CalPIRG to address a number of these actions as described in the Final Report describing work performed under the grant.

To access Plan, see www.scc.ca.gov/scwrp, WRP Documents.
For the Final Report, contact jrhartmann@aol.com.

Initial Gaps Report

An initial product of the Proposition 13 grant awarded to Environment Now on behalf of the WRP was a Gaps Report (July 2002) prepared by each of the five county watershed coordinators to orient them to the watershed issues in their counties. It describes each of the watersheds, the key

organizations working in each, the primary watershed management planning gaps within each county, and the subset of these on which the coordinators would concentrate. This report set the agenda for the coordinators in their specific counties.

To acquire, contact jrhartmann@aol.com.

Watershed Management Plans—Regional GIS Map and Data Base

Information about Watershed Management Plans, completed and underway as of July 2003, is compiled in a GIS map and data base as part of the work under a Proposition 13 grant awarded to Environment on behalf of the WRP. The map, prepared by GreenInfo Network, shows the geographic extent of watershed management planning activities in each of the five counties in the region, and indicates where no planning is currently underway. The data base provides additional bibliographical and descriptive information on the plans.

To obtain, contact jrhartmann@aol.com.

ON-THE-GROUND PROJECT WORK

Project Work Plan

Project Evaluation Criteria

Each year the project evaluation criteria evolve in light of discussions during the previous year's policy selection process and advances in available decision support tools. The criteria reflect the WRP program goals set out in the Regional Strategy (see above) and fall into three categories: ecological, policy and feasibility criteria. Do projects further habitat and ecosystem support functions? Do projects serve related policy goals? Can projects realistically move forward over the next fiscal year? Project proponents should carefully consider how their proposed projects address these criteria, which are not numerical, but establish the framework for project assessment in annual Managers Group and Governing Board deliberations.

To access, see www.scc.ca.gov/scwrp, Projects and Planning, Project Evaluation Criteria.

Project Selection Process

At the beginning of each calendar year, WRP partner agencies and county task forces solicit broadly within the region for project proposals to plan, to restore, or to acquire wetlands along the coast or in coastal watersheds. The selection criteria and process—which have been evolving over the past five years—are announced on the WRP web site hosted by the State Coastal Conservancy, in digital newsletters, and in e-mail notices sent out by county task force leaders. Generally, the task forces encourage project proposals, help to vet and refine project ideas, and host a meeting with the WRP Managers Group in which proponents can elicit feedback before submitting a proposal, usually due in early spring. In 2003, project proponents submitted "pre-proposals" (brief project descriptions) prior to these meetings.

Each task force evaluates proposals from its county and sends a representative to the annual Managers Group project review meeting. The task force representatives answer questions that arise and describe priorities related to proposals from their counties. In recent years, the State Coastal Conservancy South Coast project managers review all proposals prior to this annual meeting and present the Managers Group with their tentative list of yes, no, and maybe projects. Any member of the Managers Group or task force representative can request that a yes or no project be

moved to the maybe group. Discussion at the Managers Group then focuses on how well the "maybe" projects conform to the selection criteria. There are no weighted scores and, to date, decisions about which projects to place on the Work Plan list have been reached by consensus.

Usually the Managers Group presents the proposed Work Plan to the Governing Board in the late spring or early summer (in 2003 the schedule was delayed until early fall), highlighting the projects raising difficult policy questions so that the Governing Board can deliberate and set policy. In recent years, the Managers Group also divides the Work Plan into tier-one and tier-two projects, a classification that Board must adopt. The intent is to focus staff time and funding on tier-one projects before going forward with tier-two projects. The Managers Group also maintains a list of "incubator projects" that fit the selection criteria, but require more development work before they could move forward. The Governing Board approves the final Work Plan—but this does not guarantee funding.

Each project on the Work Plan must be assigned a Coastal Conservancy project manager who ushers the project through the Conservancy Board approval process, administers the grant, and, depending on the complexity of the project and the sophistication of the grantee, may actively oversee project implementation. Funding is not forthcoming until the Conservancy Board approves the project.

When the WRP first began, it had more money than projects; then it had more projects than money. With the spate of recent bonds it has money, and with planning funds and the development of local infrastructure, it has a pipeline of projects. Now the bottleneck is staff to administer grants and oversee projects. Thus, projects can languish on the Work Plan for want of staff.

To access, see www.scc.ca.gov/scwrp, Projects and Planning, Selection Process.

Project Work Plan

Each year the Work Plan is revised. Some projects are taken off due to completion or infeasibility and projects are added as a result of the annual project selection process. The current Work Plan lists about 50 projects. Since the WRP began, it has acquired almost 6000 acres of wetland, riparian and buffer habitat and funded scores of planning and restoration projects.

To access, see www.scc.ca.gov/scwrp, Projects and Planning, Work Plan which shows annual Work Plan and Completed/Funded Projects.

See www.wrpinfo.scc.ca.gov to view project locations in a GIS map system.

Small Grants Program

The small grants program is in its third year and was devised to build the capacity of locally based organizations to undertake restoration projects because organizational capacity—rather than funds or potential projects—is the primary factor limiting WRP accomplishments. Grants of up to \$30,000 are available from a \$200,000 fund and the application process is relatively simple. Restoration projects with an education or community involvement component are preferred. Unlike the projects selected individually for the Work Plan by the Managers Group with advice from task force representatives, small grants are selected primarily by a committee task force representatives. Earth Island Institute has contributed funds to the small grants program and serves on the grant evaluation committee.

For more information, see www.scc.ca.gov/scwrp, Projects and Planning, Small Grants Program.

Data Base of Potential Projects

This data base of projects was developed under the Proposition 13 grant from the State Water Resources Control Board to Environment Now on behalf of the WRP. While the WRP's Annual Work Plan lists projects of regional significance to which WRP funds and Coastal Conservancy staff could be devoted, the Comprehensive Project Data Base lists projects that other organizations and funders may wish to pursue. It was designed, in particular, as a ready source of projects for mitigation, settlement, or penalty funds and is anticipated that the county task forces will promote the list to potential funders. The projects are displayed by county in a GIS map created by GreenInfo Network that indicates where in the watershed the projects is located. In addition to a project description, the data base contains information about project sponsors, benefits, and costs.

To obtain, contact jrhartmann@aol.com.

WETLANDS EDUCATION & WRP OUTREACH

Initial Assessment Activities

Interpretive Centers of the South Coast

Map display showing the spatial distribution of wetland and watershed interpretive centers throughout the region.

To acquire, contact cas@lasgrwc.org.

Ventura County Strategic Plan for Environmental Education

A county-wide environmental resource inventory and needs assessment conducted by a team of University of California graduate students as a Masters Thesis in Public Policy under direction of USC professors and the Ventura County WRP Task Force and in collaboration with the California Regional Environmental Education Community (CREEC). Intensified interviews and analyses conducted in the Ormond Beach area to best inform development of programs and materials to meet the changing demographics of Ventura County. Methodology could be replicated in other counties.

To be posted at www.CREEC.org and available from ggauthier@scwrp.org.

Region-Wide Educational Materials

CREEC Compendium of Wetlands and Watershed Materials

The WRP worked with the California Regional Environmental Education Community (CREEC) to obtain grant that funded collection of educational materials related to wetlands and watersheds to post on CREEC website. Site is primary state-wide portal for teachers to access environmental education resources. It categorizes materials according to over 25 types of educational resources (e.g., learning kit, curriculum, field trip, professional development); environmental focus (e.g., watershed, wetlands, biodiversity, environmental justice); academic focus (e.g., health, science, language arts), audience served, county served and languages. WRP county task forces provided contacts and materials to CREEC. Work is still underway, but has already added 300 new records to the web site. The grant also funds several Los Angeles-area workshops on use of the site.

See www.CREEC.org.

Video—California Wetlands, Investments in Our Economic Future

A 7-minute video featuring interviews with business and community leaders throughout coastal Southern California explaining the value of healthy wetlands to them (e.g., fisheries, tourism, employee recruitment and retention, community quality of life).

To acquire, contact jrhartmann@aol.com.

Photo Exhibit—Classroom without Walls

A photo exhibition by Shawn Kelly and funded by Environment Now showing many types of people enjoying the region's coastal wetlands, rivers, and streams. Exhibited at the Sacramento Convention Center and the Long Beach Aquarium of the Pacific.

To access, see www.scc.ca.gov/sccwrp, section on WRP Tools and Information.

Maps and Photos

Available for selected coastal wetlands.

See www.scc.ca.gov/scwrp

Introduction to Southern California Coastal Wetlands

Short paper summarizing the conditions, status, and values associated with the region's coastal wetlands.

To access, see www.scc.ca.gov/sccwrp, section on WRP Documents.

Glossary of Wetland Terms

Defines terms in three categories: wetlands, beneficial uses, and special status species.

To access, see www.scc.ca.gov/sccwrp, section on WRP Tools and Information.

H2O: Headwaters to Oceans, Connecting All Life

Set of hands-on educational materials assembled by the California Public Interest Research Group WaterWatch Program under Proposition 13 grant from the State Water Resources Control Board to Environment Now on behalf of the WRP. Designed for use by University of California and California State University student volunteers for elementary school presentations throughout region.

To acquire, contact sujatha@environmentcalifornia.org. Also available is list of faculty contacts at CalState Universities.

WaterWatch Trash Inventories

As an activity under the Proposition 13 grant from the State Water Resources Control Board to Environment Now on behalf of the WRP, CalPIRG's WaterWatch program organized eight waterway clean-ups involving over 225 volunteers working more than 400 hours to collect almost a ton and a half of trash. It was inventoried to document the types of trash found throughout the region and educate people about the primary sources of solid waste in the region's waterways. Assembly Member Paul Koretz has introduced a bill to tax the largest contributors to waste in the state's waterways and the results from these inventories could serve as a source of data to support his legislation.

To obtain, contact sujatha@environmentcalifornia.org.

Educational Materials with Local Focus

San Diego Wetlands Kit

Developed by SeaWorld, which serves on the WRP Public Advisory Committee, in collaboration with educators from museums and environmental organizations in San Diego area. Contains set of materials describing vocabulary, types and value of wetlands, as well as losses, threats, and actions to take. Includes illustrated wetland species identification cards, hands-on classroom activities, a description of coastal wetlands in San Diego County with list of available services, and a color map of San Diego County's watersheds.

To acquire, contact dg@sanelijo.org.

Orange County Green Map and Power Point Presentation

Developed by Orange County Friends of Harbors Beaches and Parks, the WRP Orange County Task Force co-chair, to show how existing and potential open space areas relate to the county's rivers, streams and wetlands. Depicts WRP activities—acquisition, planning and restoration projects that have been completed, are underway, or proposed. Will be used to stimulate discussion among community leaders about land acquisition strategies.

To acquire, contact jwatt4@aol.com.

Watershed Guide for Ventura County Board of Supervisors

Booklet created to accompany presentation to the Ventura County Board of Supervisors. Shows percentages of different watersheds in each supervisorial district. Also depicts WRP activities by district and WRP funding to county.

To acquire, contact ggauthier@scwrp.org.

Santa Barbara Creek Care Guide

A 35-page guide published by Community Environmental Council, WRP county task force co-chair, and the County of Santa Barbara. To be distributed to all riparian landowners, schools, libraries and other interested parties. To educate local residents on how local wetlands, creeks, and watersheds function, what factors influence their health, and the actions that local residents can take to practice good stewardship. Also discusses what landowners can do to protect or restore creeks that run through their lands.

To acquire, contact bthiel@scwrp.org.

Symposia, Sacramento Legislative Breakfast & Workshops

Symposia

The WRP has sponsored annual symposia at SeaWorld in San Diego (2000), in Orange County (2001), and in Ventura County (2002). The different constituents of the WRP to come together to learn about new developments in wetlands science and policy, to share success stories, and celebrate the growing regional wetlands community. The 2003 Symposium, *Headwater to Oceans—Integrating Rivers, Wetlands and Coastlines in an Urban Environment* is jointly sponsored by the WRP, California Coastal Coalition, California Shore and Beach Preservation Association, and the Society of Wetlands Scientists (Western Chapter). It will be held in Long Beach, October 23-25.

For information, contact jrhartmann@aol.com.

Sacramento Legislative Breakfast

For the past four years the WRP has joined with the California Coastal Coalition to sponsor a legislative breakfast to hear about the latest policy developments from Sacramento decision makers and to showcase the values of Southern California's beaches, wetlands and watersheds. The 2002 event focused on educational values and the 2003 event focused on ecotourism. The event is co-chaired by a Senate and Assembly member and features top government officials as keynoters. Environment Now has sponsored 25 stipends for

people to travel to Sacramento to attend and meet with legislators. The 2004 event is slated to focus on regional scientific assessment models currently under development by the WRP Science Panel and the Coastal Sediment Working Group.

For information, contact steveaceti@calcoast.org and jrhartmann@aol.com.

Workshops

The WRP county task forces have sponsored a number of workshops related to wetlands recovery in conjunction with the State Coastal Conservancy and with support of the Proposition 13 grant to Environment Now on behalf of the WRP. Workshops addressed arundo removal (held in Ventura County), sustainable watershed interpretive centers (held in Orange County) and the Santa Clara River (held in both Ventura County and later in Los Angeles County). Funding workshops discussed below.

For information on Ventura workshops, contact ggauthier@scwrp.org and on the Los Angeles and Orange County workshops, contact mloquvam@scwrp.org.

Activities to Promote Diversity

Selected WRP Small Grants

AWAITING TEXT

For information, see www.scc.ca.gov/scwrp, Small grant program, or contact skelly@scwrp.org.

Partnership with Mexican American Opportunity Foundation

The UC Cooperative Extension Program serves as an active member of the WRP Los Angeles County Task Force Education Working Group. On behalf of the Working Group, it has established a partnership with the Mexican American Opportunity Foundation (MAOF) to help teach English and citizenship to immigrants and new citizens using wetlands and watershed tours and activities. The UC Extension program is organizing activities for MAOF trainers by drawing from what is offered and available through the organizations of the Working Group members.

For information, contact sldrill@ucdavis.edu.

Greig Peters Wetlands Recovery Awards

Award program to honor those who exemplify the traits and accomplishments that promote wetlands recovery in coastal

Southern California's complex urbanized setting. Bestowed for (1) pioneering collaborative efforts; (2) work that yields important wetlands benefits; and (3) persisting in the face of adversity. Named in honor of the 2001 recipient, Greig Peters, who passed away shortly before he would have received the award. He was described as "a person with many victories known and unknown—won by a quiet and unknown man, working unobtrusively behind the scenes to achieve great things."

For information, contact armbrustr@vcss.k12.ca.us.

Initial WRP Outreach Activities

Initial Outreach Survey

The First Phase of the Southern California Wetlands Clearinghouse Public Outreach Effort, submitted to the state Coastal Conservancy, by Joan Hartmann (June 1998) 50+ pp. Findings based on survey of over 150 people in the region to determine their wetlands interests and to recommend the best regional structure for addressing community interests.

For more information, contact jrhartmann@aol.com.

Evolution of WRP

The First Phase of the Southern California Wetlands Recovery Project: The Unfolding Story describes the origins of the WRP.

See [GOLDEN GATE LAW REVIEW](#) article by J. Hartmann, Spring 2000.

WRP Outreach Resources

WRP Logo

A stylized least tern and southern steelhead trout are depicted on the WRP logo, funded by Environment Now. Both species are endangered endemic to coastal Southern California. The least tern, a migratory bird, is found in the region's coastal wetlands and the southern steelhead trout, an anadromous fish, migrates from the headwaters of the region's coastal watersheds to the oceans and back again. Least terns and steelhead trout are indicators of coastal wetland and watershed health, respectively; their recovery will signify the ultimate success of the WRP.

Logo available in color and black and white versions, with and without background; contact jrhartmann@aol.com.

Wetlands Recovery Project Brochure & Insert

Designed by Patagonia; brochure describes the WRP vision, partners, and includes map of the regions coastal wetlands and watersheds. The insert is designed to be updated frequently to describe project achievements.

To obtain, contactjrhartmann@aol.com.

WRP News and Info

Digital newsletter regularly sent to subscribers to the list serv on the State Coastal Conservancy web site. Announces grant and other funding opportunities, educational activities, WRP meetings, job postings.

See www.scc.ca.gov/sccwrp, to subscribe to list serv.

CalCoast Legislative Update

Weekly digital newsletter sent to those with interest in state and federal government activities that affect California's coastal resources.

To subscribe, contact steveaceti@calcoast.org.

E-Mail Lists of Interested Parties

Maintained by the State Coastal Conservancy, CalCoast, and also by each of the five WRP county task forces.

Subscribe at www.scc.ca.gov/scwrp, steveaceti@calcoast.org, and dg@sanelijo.org (San Diego County); jwatt4@aol.com (Orange County); rick@lasgrwc.org (Los Angeles County); ggauthier@scwrp.org (Ventura County); and bthiel@scwrp.org (Santa Barbara County).

Community Volunteer Calendar

To find out about or post opportunities to attend events related to wetlands and watersheds in the five counties of coastal Southern California. Entries automatically deleted after the date passes.

To access, see www.cleanwater.org. To post opportunities, use the password "cleanwater."

SCIENCE & RESEARCH

Matrix of Studies on Monitoring Metrics

Compendium of peer-reviewed research studies. Framework developed by WRP Science Panel to support development of indicators to measure the condition of coastal Southern California's wetland and riparian areas. Will inform design of the California Rapid Assessment Methodology (CRAM; see above). Available as Access data base.

Currently available from marthas@sccwrp.org; soon to be loaded onto the WRP Information Station at www.wrpinfo.scc.ca.gov.

Treatment Wetlands Review

Literature summary of peer-reviewed publications. Conducted by the Southern California Coastal Water Research Project to determine the role of wetlands in filtering contaminants; focuses on how using wetlands to enhance water quality affects habitat values. May inform decisions on where and what kind of wetlands should be used to treat water. Funded by the State Coastal Conservancy.

To be posted at www.scc.ca.gov.

FUNDING

WRP Funds

The WRP partnership establishes regional acquisition and restoration priorities to which it directs its funds (mainly administered through the State Coastal Conservancy) and to which it seeks to have partners direct their funds as well in order to use resources efficiently and effectively.

The section above, Project Work Plan, describes the process for obtaining WRP funds.

Non WRP Funds

Government Grants

The WRP web site hosted by the state Coastal Conservancy has two different sections with information on grants available for wetlands restoration.

See www.scc.ca.gov, WRP Tools and Info and Resources.

Local Funding Sources

For listing, see County-by-County Listing of Potential Project Funders, a data base created under the Proposition 13 grant to Environment Now on behalf of the WRP.

To acquire, contact jrhartmann@aol.com.

Funding Workshops & Grant Writing

Under the Proposition 13 grant awarded to Environment Now on behalf of the WRP, the five watershed coordinators each conducted well-attended funding workshops. The workshops encouraged those with project ideas to write grant proposals and pursue funding from a variety of sources, not just the WRP. The coordinators wrote or helped to write a number of non-WRP grants.

For funding workshop information, contact ggauthier@scwrp.org (Santa Barbara and Ventura Counties); contact mloquvam@scwrp.org (Los Angeles and Orange Counties); and dg@sanelijo.org (San Diego County). For list of grants submitted with assistance from the watershed coordinators, contact jrhartmann@aol.com.

RELATED PROJECT WORK

Other Regional Partnerships Identifying & Ranking Projects

A number of efforts besides the WRP identify projects and set regional priorities in coastal Southern California. While the WRP focuses primarily on habitat preservation and restoration, the other efforts each has its own focus. Nonetheless, there is some overlap among the projects, and one day it may be possible to overlay the project lists by watershed to identify projects of mutual interest and ensure that projects are not working at cross purposes.

Clean Beaches Initiative

Statutory authority to use proposition funds for Clean Beaches Initiative projects that help local agencies, non-profit organizations, and public agencies implement projects that protect and restore California's coastal water quality. Project priorities are (1) to improve water quality at public beaches to meet current ocean water bacterial standards; (2) to improve, upgrade, or convert existing sewer collection systems and septic systems for the restoration and protection of coastal water quality; (3) to implement storm water and runoff pollution reduction and prevention programs for the restoration and protection of coastal water quality; or (4) to implement best management practices for the restoration and protection of coastal water quality. A Clean Beaches Task Force appointed by the State Water Resources Control Board reviews projects and makes recommendations for grant funding.

See www.swrcb.ca.gov/cwphome/beaches/

California Coastal Sediment Management

The California Resources Agency and the U.S. Army Corps of Engineers, South Pacific Division, co-chair a partnership aimed at developing a comprehensive coastal sediment management strategy that encompasses beach nourishment, port and harbor dredging, coastal wetland and estuarine restoration, and flood control system maintenance within coastal watersheds. The Coastal Sediment Management Working Group meets regularly. It is engaged in scientific studies, policy changes, and on-the-ground projects, initially concentrated in Southern California.

See www.spd.usace.army.mil/csmwonline or contact steveaceti@calcoast.org.

Southern California Water Dialog

The Southern California Water Dialogue explores the common interests among Southern California water agencies,

environmental organizations, and public interest organizations, particularly as they relate to regional objectives and the California Bay-Delta Authority (formerly CALFED) and represents the Bay-Delta Authority in the Southern California region. The Metropolitan Water District of Southern California typically hosts monthly to address the management of Southern California's water supply to meet future needs and focus on reliability, water quality, conservation, recycling, storage, conveyance, and watershed management. The Dialogue has developed a list of projects that may be eligible for Bay-Delta Authority funding given that Southern California is part of its "solution area." The data base of potential projects developed under a Proposition 13 grant to Environment Now on behalf of the WRP is included in that list.

See www.socalwaterdialogue.org.

Emerging Regional Approaches

California Legacy Project

The Legacy Project is to identify the means through which the State can pursue a comprehensive, strategic approach to preserving, restoring, and sustaining working landscapes, open space, and biological resources. It is a statewide effort to integrate conservation assessment and planning among five different conservation objectives: (1) terrestrial biodiversity, (2) aquatic biodiversity and watershed values, (3) working landscapes, (4) recreation lands, and (5) urban open space. It is engaged in data compilation and analysis, assessing the condition of resources, examining legal mandates pertaining to resource protection, and reporting on resource protection priorities. It seeks to create a foundation on which government agencies and coordinate their land acquisition and protection activities.

See www.ccrisp.ca.gov/

Critical Coastal Areas of Southern California

California's Critical Coastal Areas (CCAs) Program is to foster collaboration among local stakeholders and government agencies, to better coordinate resources and focus efforts on coastal-zone watershed areas in critical need of protection from polluted runoff. A multi-agency statewide committee has identified an initial list of 101 CCAs along the coast and within San Francisco Bay. The criteria used to identify CCAs reflect the dual goals of improving degraded water quality, and providing extra protection from polluted runoff to marine areas with

recognized high resource value. Beginning with four pilot CCAs, the CCA Program will form teams of local stakeholders (watershed groups, special interest organizations, and community members) and government agencies (state, federal, and local) to develop community-based CCA Action Plans for addressing polluted runoff that threatens coastal resources within these CCAs. CCA identification may be used to support the acquisition of grant funding by prioritizing protection efforts. Information Exchange Forum on the South Coast scheduled for July 2003 offering opportunity for public to provide input on the water quality and land use issues in each CCA's watershed, to aid in the selection of a regional pilot project. One of the pilot CCAs to be selected in the South Coast.

See www.coastal.ca.gov/nps/cca-nps.html.

Other

Two other programs merit attention: the Recovery Program for the endangered Southern Steelhead Trout which is likely to generate project proposals related to the interests of the WRP and the Agricultural Waiver under the Clean Water Act. The State Water Quality Regional Control Board is developing a replacement for the expired Clean Water Act waivers for irrigated agriculture. The new program will ask agriculturalists to demonstrate how they are improving and protecting water quality. Best management practices are likely to include measures to reduce agricultural runoff pollution and also to protect habitat and restore rivers, streams, and creeks through bank stabilization, exotic removal, revegetation with native species along riparian corridors, etc.